

HARMONIE

COLLECTION



feltkütür
AŁKEGEN

YAMASKA

THE YAMASKA DESIGN IS PART
OF OUR NEW COLLECTION OF
ACOUSTIC WALL TILES NAMED
HARMONIE, BY FELTKÜTUR.



ACOUSTICAL WALL TILES

The Yamaska model is composed of a geometric shape popular in the world of design thanks to its triangular pattern. Triangle patterns are confident, dynamic and will energize your room. They can also be put to good use in offices and areas dedicated to an environment where concentration is paramount, as its shape suggests persistence, followed by the achievement of goals.

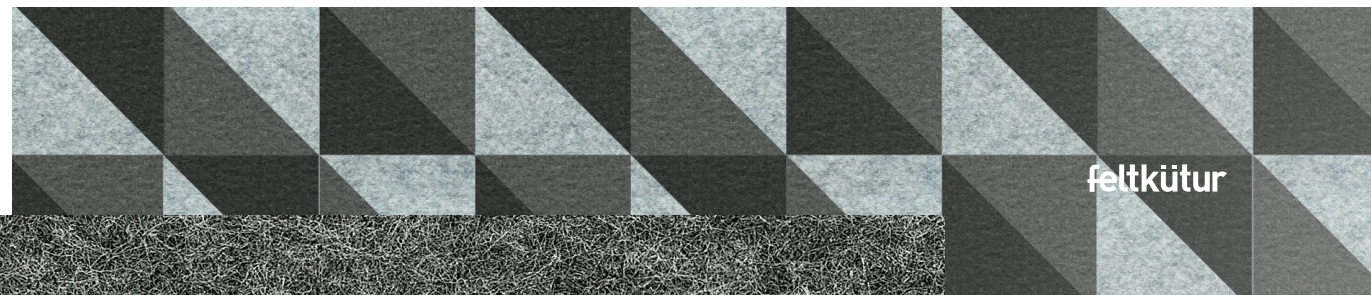
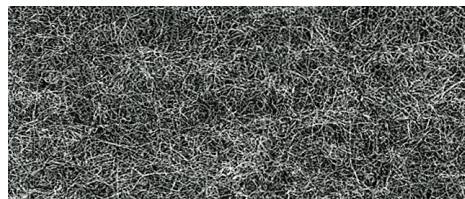
COLORS

The Yamaska is a perfect blend of our three shades of grey; the Saint-Sebastien, the Westmont and the Fermont. When you're working a space with grey, it's relatively easy to introduce a bright, vivid new color by adding accent pieces. Whatever your choice, grey fills the gaps easily and with dignity.

INSTALLATION

The Dütex Tahmea acoustical panel, adhesive technology applied to the back of the panel, is "ready to install". Make sure to clean the wall where the installation will be done and let it dry before laying the tiles.

gray Westmont



feltkütür



COLORS

Oka evokes a feeling of warmth, security, mixed with a sense of renewal, peace and rest. The colors of the Düotex acoustical panels including green Sainte-Marie, beige Percé and beige Woburn, harmonize the environment thanks to the benefits that these colors express.

INSTALLATION

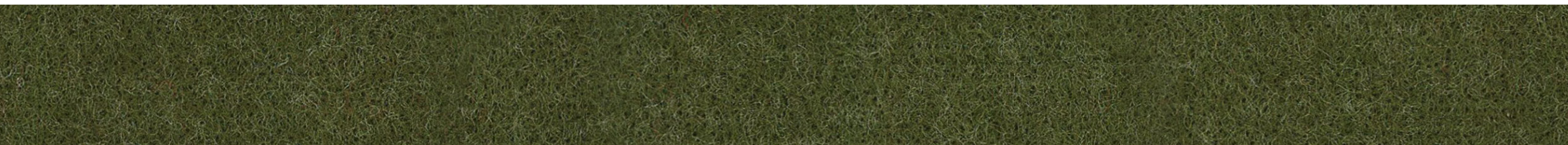
Thanks to the Düotex Tahmea, an adhesive technology applied to the back of the Düotex panel, and the use of the starter kit, the installation of the tiles is simplified. The 6.4mm and 12.7mm thicknesses of the Düotex panels will offer room users a promising artistic effect!

ACOUSTICAL WALL TILES

The ancient Greeks were the first to adopt geometric design in their interiors because of the way it achieved structure and serenity. Just like the hexagon, some shapes will always feel extravagant and innovative. We invite you to do the exercise of placing a hexagonal shape on a wall in the room and you will immediately notice the effect it has on the personality of an environment.

OKA

**OUR NEW COLLECTION OF
ACOUSTIC TILES, OKA, FROM THE
NEW HARMONIE COLLECTION BY
FELTKÜTUR, IS NOW AVAILABLE.**



green Ste-Marie

feltkütur

HOCHELAGA

THE INNOVATIVE DESIGN
OF THE HOCHELAGA
MODEL IS NOW AVAILABLE
AS PART OF FELTKÜTUR'S
SELECTION OF HARMONIE
ACOUSTICAL TILES
COLLECTION.

ACOUSTICAL WALL TILES

The different shapes making up the Hochelaga model is an assembly of curved lines. They give the effect of comfort, friendliness and give a feeling of sensuality and love. Round shapes suggest community, integrity and perfection.

tan Percé

COLORS

The color scheme of the Hochelaga model presents a contrast of blue Saint-Georges and the two beige colors of the collection; Percé and Woburn. Beige colors are popular interior colors because they allow us to accentuate other elements of the room. In terms of interior design, the blue color is attributed with benefits such as purity and peace.

THE ACOUSTICS

Our models of acoustical tiles help to attenuate the echo in the environment. The set being composed of two thicknesses, 6.4mm and 12.7mm, these build obstacles in the path of the sound and tend to reduce its strength.

feltkütür



KENOGAMI

**THE EXCEPTIONAL KENOGAMI
PATTERN FROM THE COLLECTION
OF ACOUSTIC WALL TILES IS AT
YOUR FINGERTIPS, IT IS PART OF
OUR COLLECTION, HARMONIE.**

SUGGESTED APPLICATIONS

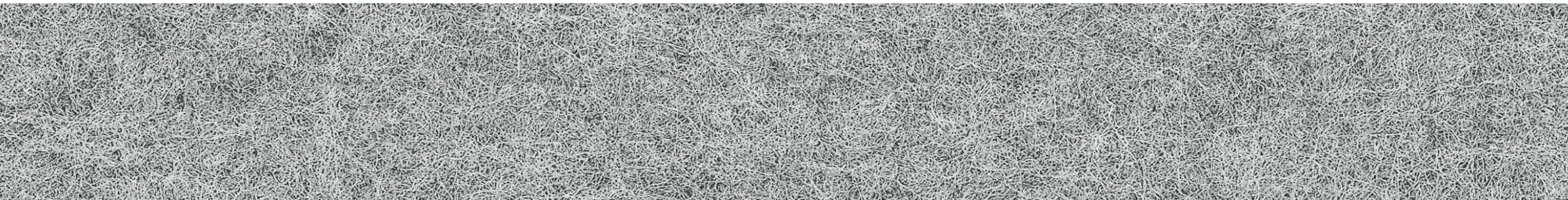
It is possible to create several models with the basic Kenogami set. The product data sheet presents applications from the simplest to the most complex arrangements. Depending on the character given to the area, the application of the Tahmea acoustical tiles allows you to stick to the line of creativity given to the environment.

THE ACOUSTICS

The dissipation of acoustic energy from uneven surfaces is not only due to its shape, but also depends on the properties of our Düotex acoustic felt (porosity, resistivity, etc.).

ACOUSTICAL WALL TILES

The Kenogami is a set of felted acoustic tiles that adds more visual interest to your decor with its asymmetrical shapes. This template is perfect when you want to draw attention to a feature in your design. The space will feel more casual and lived in. Often preferred in areas with more traffic such as lobbies, reception areas, etc.



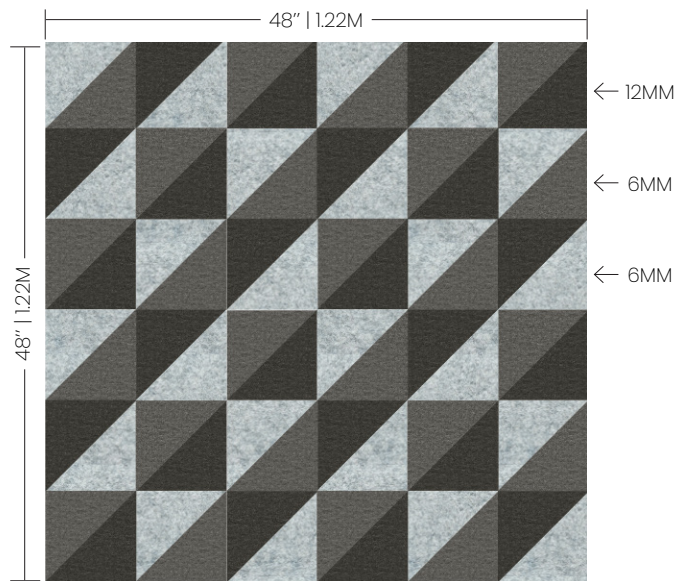
gris St-Sebastien

feltküter

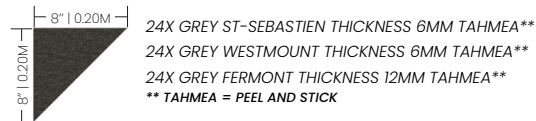
SPECIFICATIONS



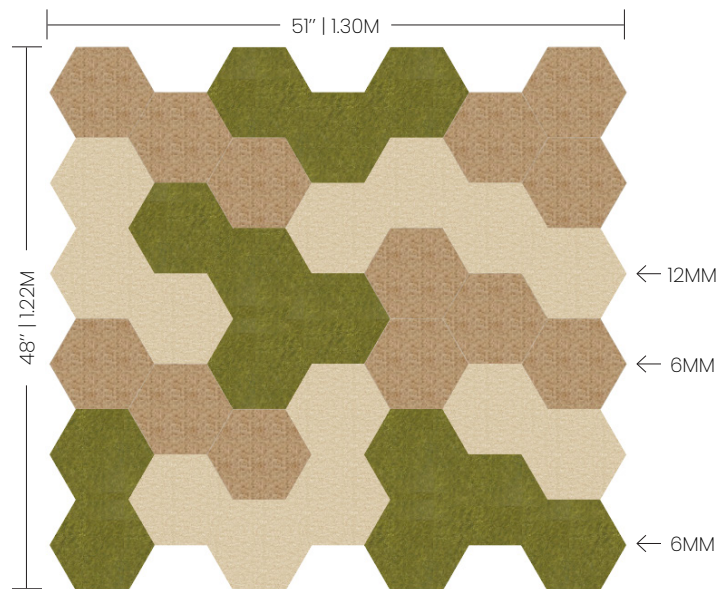
YAMASKA



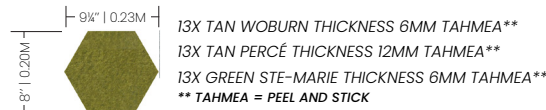
COVERED AREA: 16' FT² | 1.49M²



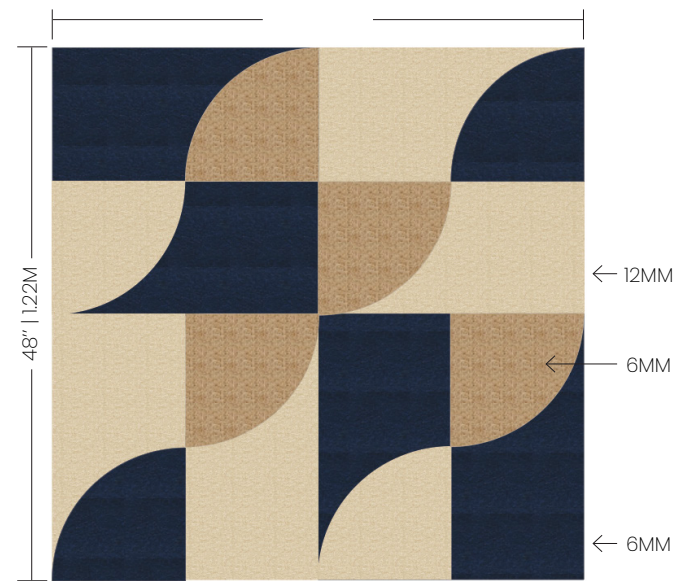
OKA



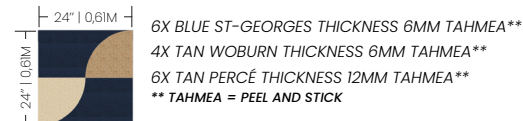
COVERED AREA: 15' FT² | 1.39M²



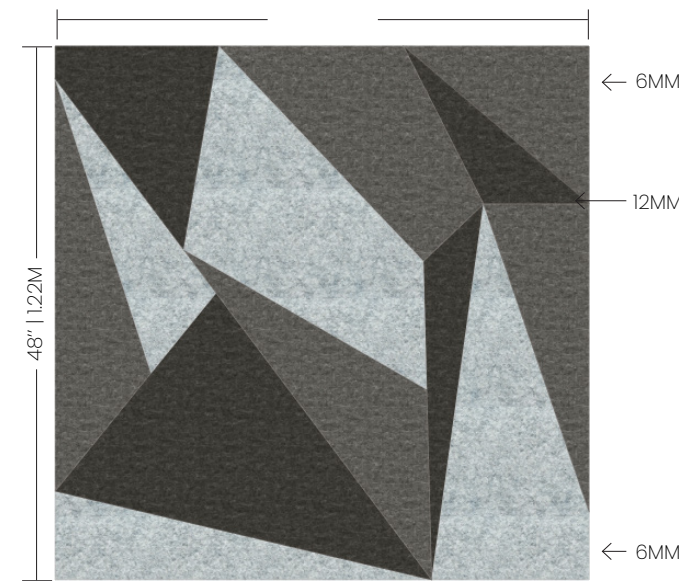
HOCHELAGA



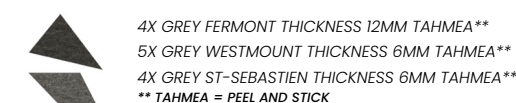
COVERED AREA: 16' FT² | 1.49M²



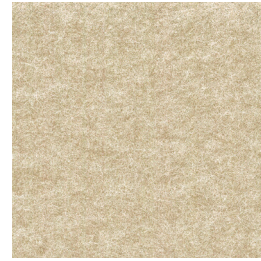
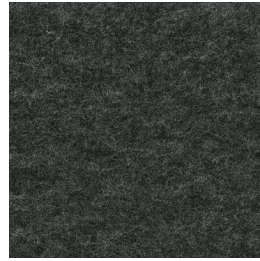
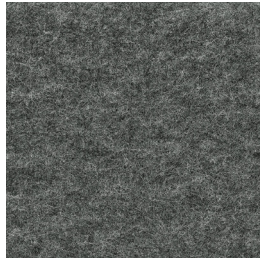
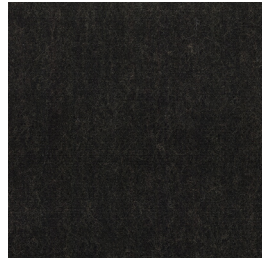
KENOGAMI



COVERED AREA: 16' FT² | 1.49M²

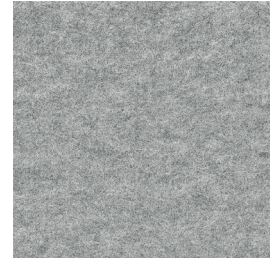


feltkütür



TECHNICAL SPECIFICATIONS

	Düotex 6.4mm	Düotex 12.7mm
WEIGHT SURFACE	1100 g/m²	2840 g/m²
THICKNESS	6.4 mm	12.7mm
SAA	0.23	0.4
NRC	0.23	0.39
ASTM E-84 FSI	CLASS A	CLASS C
ASTM-E84 SDI	CLASS A	>450
CAN/ULC S-102 FSR	20	N/A
CAN/ULC S-102 FSC	420	N/A
ADHESIVE	ACRYLIC TRANSFER FILM	
* Do not fold the Düotex Tahmea panel		



ALKEGEN

www.feltkutupur.com

Follow us

