

# GAİA

COLLECTION



**feltkütür**

AŁKEGEN

# CÉOS

OUR NEW WALL TILE MODEL,  
CÉOS, IS PART OF THE NEW  
GAÏA ACOUSTIC TILES  
COLLECTION, BY FELTKÜTUR.



## ACOUSTICAL WALL TILES

The Céos acoustic tile model offers a chevron-shaped pattern, representing a V. Originating from a weaving pattern, the design market has reinvented the chevron in order to make it a decorative element. One of the advantages of this pattern is the ease of integrating it into any decor. The zigzag lines will look beautiful wherever you decide to apply this model. This very original decorative pattern will enhance your design and enhance your environment. It is ideal for covering the walls of a restaurant.

## COLORS

Offering contrasting colors, this model offers a feeling of relaxation and comfort thanks to the Tan Percé color and also thanks to the three shades of grey: Saint-Sébastien, Westmont and Fermont. It allows for a perfect match with many design styles such as contemporary, modern and minimalistic.

## THE ACOUSTICS

The artistic expression results from a marriage of two thicknesses, 6.4mm and 12.7mm, of our acoustic felt Düotex, but the three-dimensional effect allows to dampen the echo in the environment. The dissipation of acoustic energy from irregular cavities is not only due to its shape, but also depends on the properties of our Düotex acoustic felt (porosity, resistivity, etc.).

## INSTALLATION

Thanks to the Düotex Tahmea, an adhesive technology applied to the back of the Düotex panel, and the use of the starter kit, the installation of the tiles is simplified!

*tan Percé*



**feltkütur**



### **COLORS**

Featuring a light grey tone, this set features the gray Saint-Sébastien, bringing a sense of balance to any decor. This color choice makes it easy to coordinate with other elements in your space, as its neutral tone leaves room for your accent color.

### **AN ARTISTIC EFFECT**

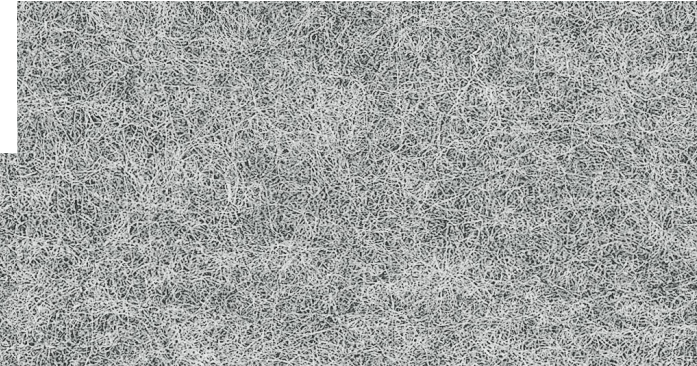
The depth effect is created when the two different thicknesses of the Düotex panel are installed. This offers a very interesting artistic effect if you want to offer a three-dimensional effect to your decor.

### **INSTALLATION**

These tiles of 6"x12" each have been designed for an "easy to use" installation since the acoustic tiles are cut in the Düotex Tahmea, adhesive technology applied to the back of the panel.

### **ACOUSTICAL WALL TILES**

The Pontos acoustical tile pattern offers a brick-like visual when installed on walls. It allows you to create a rustic and modern atmosphere in the room of your choice, whether for an entrance hall, a school, etc. Nothing better than a pattern of decorative interior bricks to offer a soothing and, by the same token, industrial atmosphere.



# PONTOS

**THE PONTOS MODEL IS A SET  
OF TILES PART OF THE GAÏA  
ACOUSTIC TILES COLLECTION,  
BY FELTKÜTUR.**

*gray St-Sébastien*

**feltkütür**

# POSÉIDON

A NEW ADDITION TO THE GAÏA  
ACOUSTIC TILES COLLECTION IS  
THE POSÉIDON MODEL,  
BY FELTKÜTUR.

## ACOUSTICAL WALL TILES

The Poséidon acoustical tile model projects an artistic effect thanks to the particularity of its lines. Straight lines, representing simplicity, rigor and determination, are married with horizontal lines, representing the horizon, tranquility and openness. A nice mix of features to make for a creative and serene environment.

## COLORS

The beauty that this color mix offers, between the gray Saint-Sébastien and the blue Saint-Georges, is an aspect of coherence and a versatile combination. Thus mixing an atmosphere advocating confidence, serenity by the blue color and the balance brought by the grey color.

## THE ACOUSTICS

Acoustic control in environments is a major challenge. Our model of acoustic tiles, made up of Düotex felted panels, will be able to control some of the echo irritants in the room. By using shapes of different thicknesses, 6.4mm and 12.7mm, they will improve acoustic comfort since the echo in the room will be reduced by the different thicknesses which will attenuate its amplitude.

## INSTALLATION

The layout of the tiles can be done according to your imagination. This is the beauty of all our acoustic tile models. In order to give you an overview, three models are made available on the product data sheet. Since the acoustical tiles are cut from the Düotex Tahmea felt panel, an adhesive technology applied to the back of the panel, the installation of the tiles is made accessible to everyone.

*blue St-Georges*

**feltkütür**



#### **A DEPTH EFFECT**

Like the other models in the collection, the combination of the two thicknesses offered with Düotex allows you to add a depth effect to your decor!

#### **INSTALLATION**

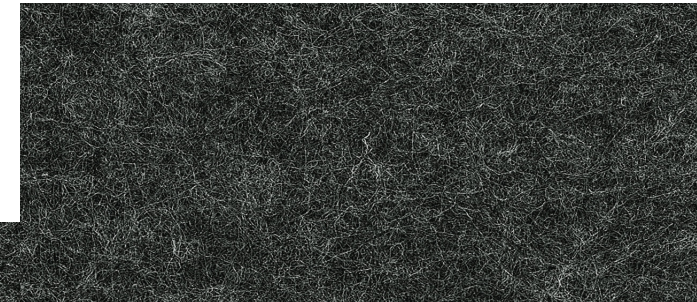
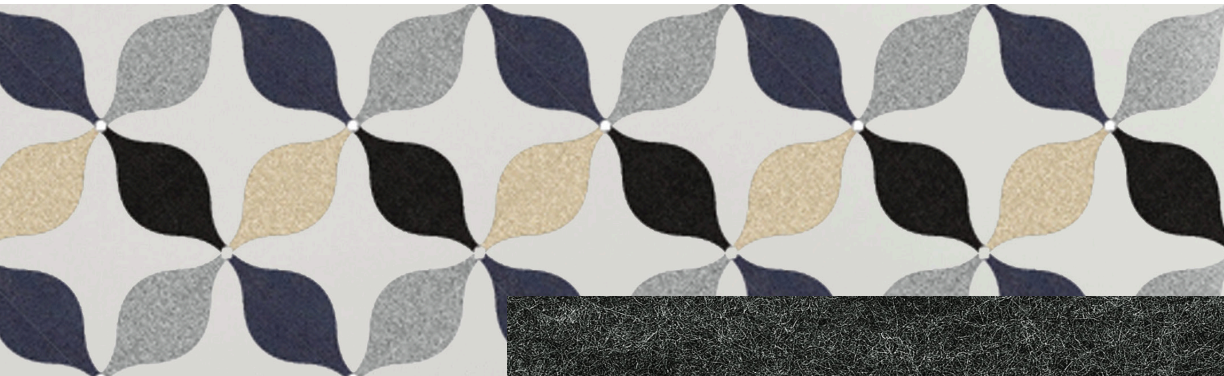
Thanks to the Düotex Tahmea, a simplified adhesive technology applied to the back of the panel, and the use of the starter kit for this tile model, the installation will be a snap!

#### **ACOUSTICAL WALL TILES**

The Typhon model is a harmonious arrangement of a unique shape having the silhouette of a magnifying glass. Its curved lines signify fullness, encouraging self-fulfillment. The attention given to the elements of your decor is the key to success in obtaining an environment where the occupants feel good. The feeling of seeing an abstract design helps activate your creativity. The ideal location for the application of this model would be in schools or office spaces.

# TYPHON

THE TYPHON IS A CREATION  
THAT FITS PERFECTLY WITH  
THE COMMON THREAD OF THE  
**CREATIVE PART OF THE GAÏA  
ACOUSTIC TILES COLLECTION,  
BY FELKÜTUR.**



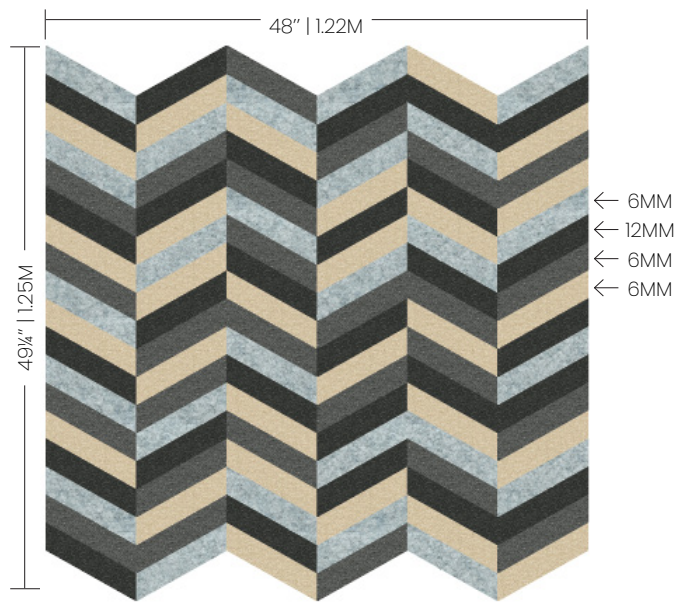
*Gray Fermont*

**feltkütür**

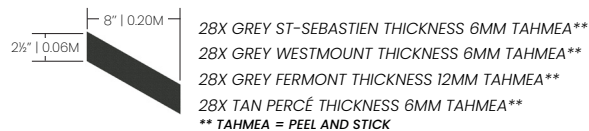
# SPECIFICATIONS



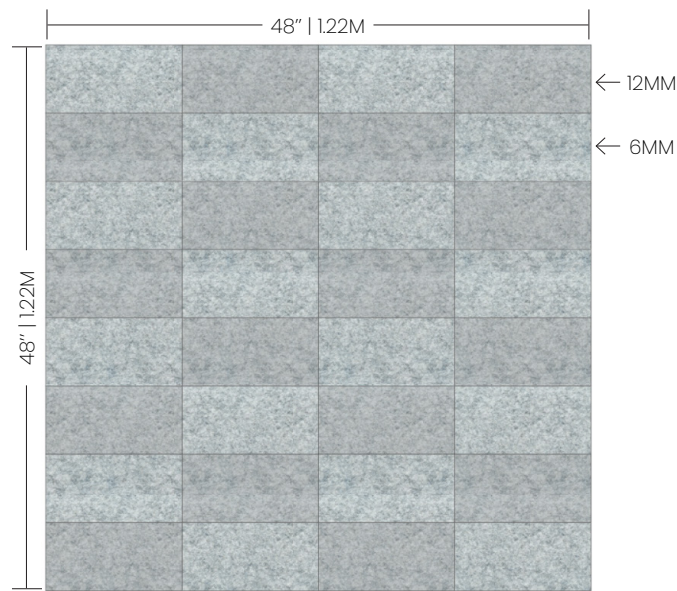
## CÉOS



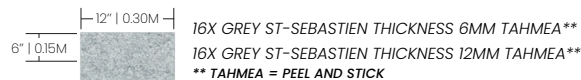
COVERED AREA: 15-1/2' FT² | 1.49M²



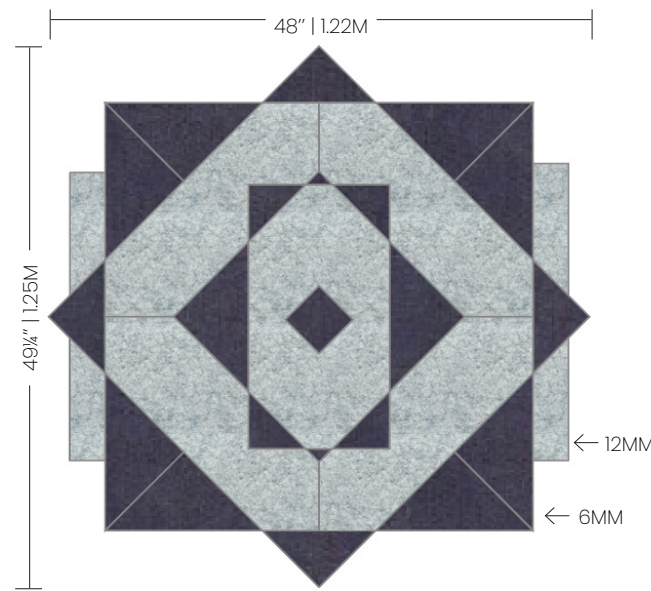
## PONTOS



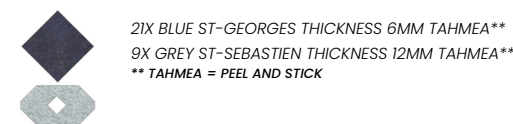
COVERED AREA: 16' FT² | 1.49M²



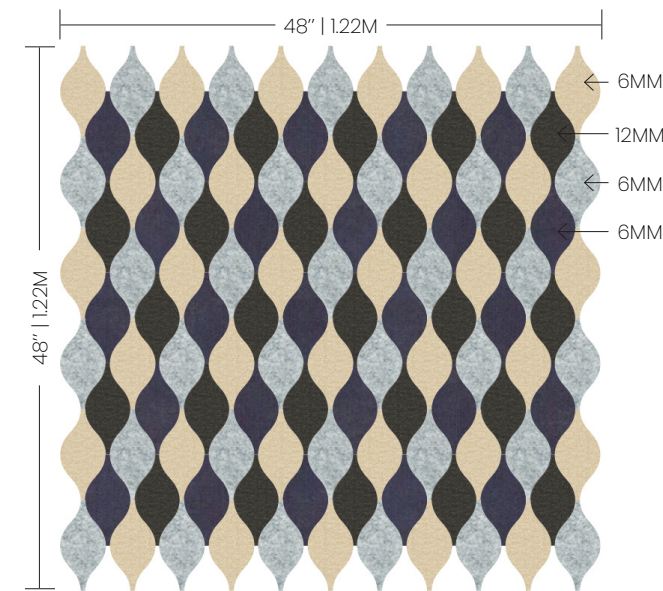
## POSÉIDON



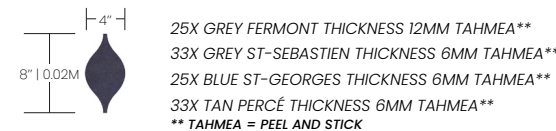
COVERED AREA: 11-1/2' FT² | 1.07M²



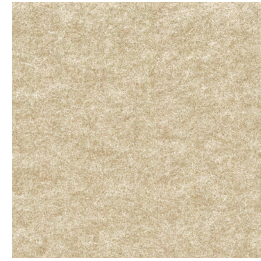
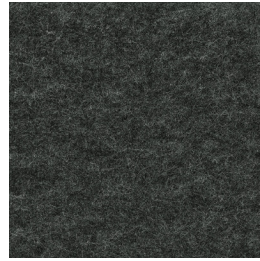
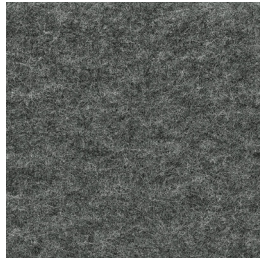
## TYPHON



COVERED AREA: 15-1/2' FT² | 1.49M²

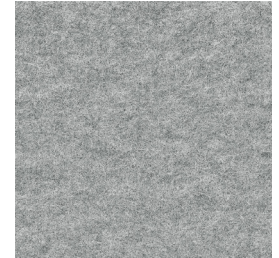


**feltkütür**



# TECHNICAL SPECIFICATIONS

	Düotex 6.4mm	Düotex 12.7mm
WEIGHT SURFACE	1100 g/m²	2840 g/m²
THICKNESS	6.4 mm	12.7mm
SAA	0.23	0.4
NRC	0.23	0.39
ASTM E-84 FSI	CLASS A	CLASS C
ASTM-E84 SDI	CLASS A	>450
CAN/ULC S-102 FSR	20	N/A
CAN/ULC S-102 FSC	420	N/A
ADHESIVE	ACRYLIC TRANSFER FILM	
* Do not fold the Düotex Tahmea panel		



ALKEGEN

[www.feltkutupur.com](http://www.feltkutupur.com)

Follow us

