

5

4

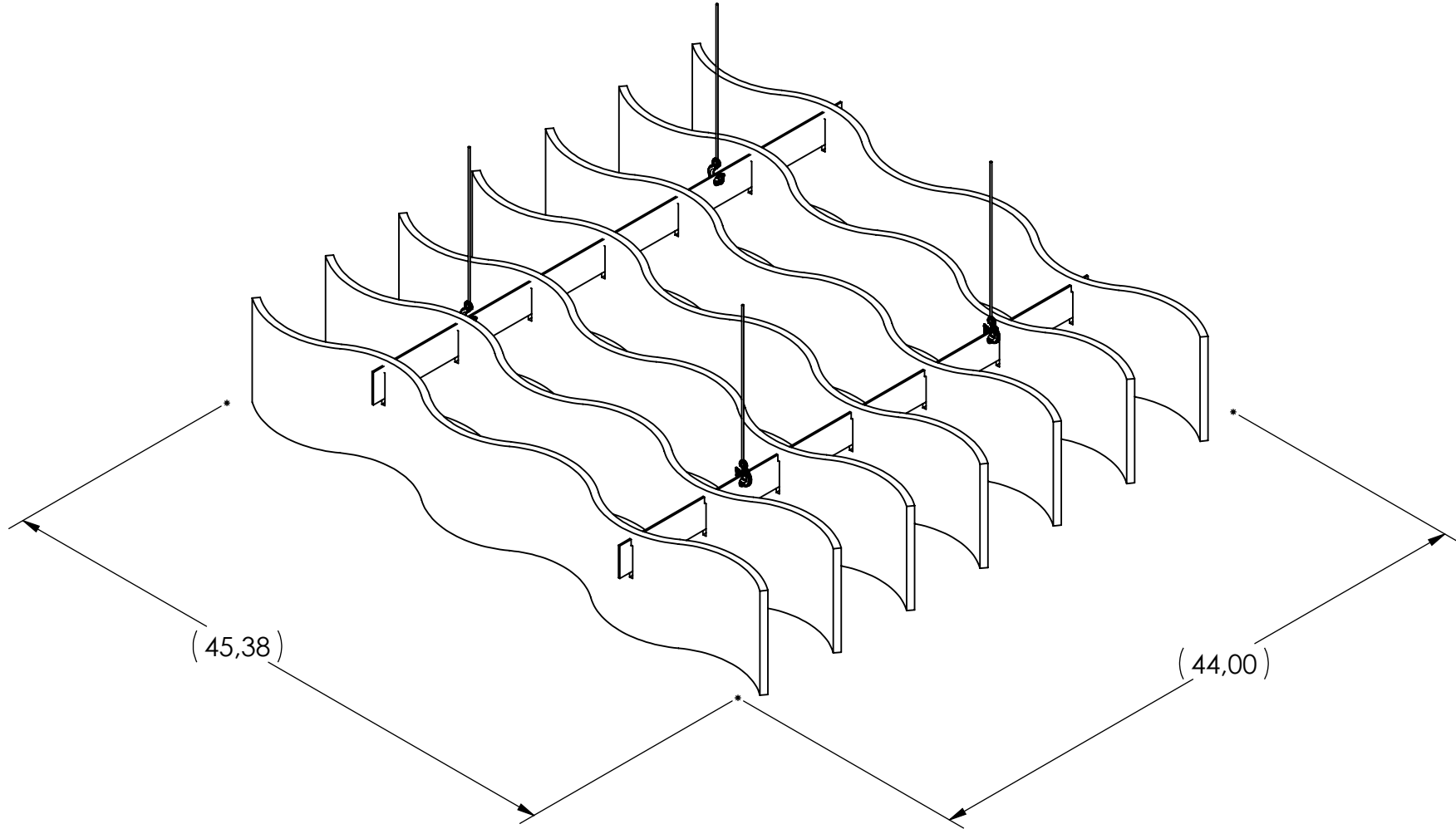
3

2

1

NOTES:

1. PARTIALLY DEFINED DRAWING.
  1. FOR ANY MISSING DIMENSIONS, REFER TO 3D MODEL #ALK-QC7-001-0001 OF SAME VERSION AS THE CURRENT DRAWING NUMBER.
  2. DIMENSIONS FROM THE 3D MODEL ARE BASIC.
  3. GENERAL TOLERANCE FOR THESE DIMENSIONS IS  $\boxed{\text{0.02}}$ .
2. THE PART MUST BE CLEAN AND FREE OF ANY PARTICLE, DUST, METAL CHIP AND CUTTING FLUID.
3. UNLESS OTHERWISE SPECIFIED, ALL DIMENSIONS APPLY BEFORE PAINTING OR PLATING.
4. ASSEMBLE AND PACKAGE USING WORK INSTRUCTIONS AND ENGINEERING SPECIFICATIONS (IF APPLICABLE) RELATED TO THIS PRODUCT.



<p>© 9443-9965 QUÉBEC INC. 2023 THIS DRAWING IS CONFIDENTIAL AND IS THE SOLE PROPERTY OF BESPLINE (9443-9965 QUÉBEC INC.) WHO RESERVES ALL RIGHTS THEREIN. THIS DRAWING IS SUBMITTED IN CONFIDENCE FOR CONSIDERATION BY THE RECIPIENT ALONE. ANY UNAUTHORIZED USE, REPRODUCTION, DISTRIBUTION, OR DISCLOSURE OF THIS DRAWING, IN WHOLE OR IN PART, IS STRICTLY PROHIBITED UNLESS EXPRESSLY GRANTED IN WRITING.</p>	<b>GENERAL TOLERANCES</b> (UNLESS OTHERWISE SPECIFIED) X.X : ± .020 X.XX : ± .010 X.XXX : ± .005 ANGLE : ± 1°	<b>DRAWING NUMBER</b> <b>ALK-QC7-001-0001</b>		<b>DRAWING TITLE</b> <b>ATLANTIC</b>				
	<b>&lt;OPTIS-SFI&gt;</b> <b>DIMENSIONS ARE IN:</b> <b>INCHES</b> <b>BREAK ALL SHARP EDGES</b>	<b>DESIGNED / DRAWN BY</b> <b>M. A.</b>	<b>DATE</b> <b>2024-03-13</b>	<b>MATERIAL / SPEC</b> <b>DIVERS</b>				
		<b>CHECKED BY</b>	<b>DATE</b>	<b>FINISH</b> <b>AUCUN</b>				
		<b>IN ACCORDANCE WITH ASME</b> <b>Y14.5-2009.</b> <b>DO NOT SCALE DRAWING.</b>		<b>MASS</b> <b>10.282 lb</b>	<b>DWG REV</b>		<b>SCALE</b> <b>1:10</b>	<b>SIZE</b> <b>A</b>

5

4

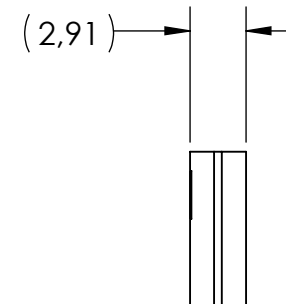
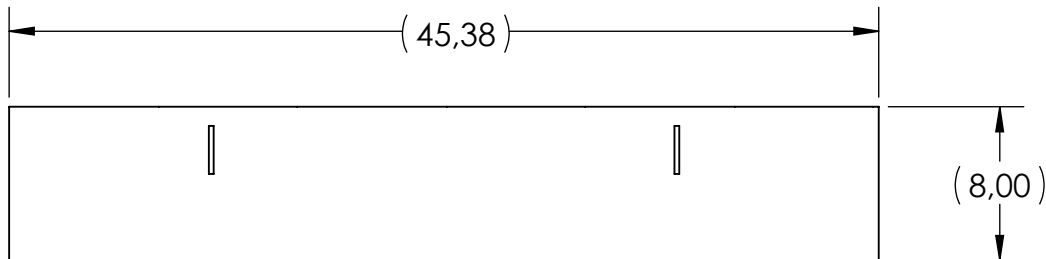
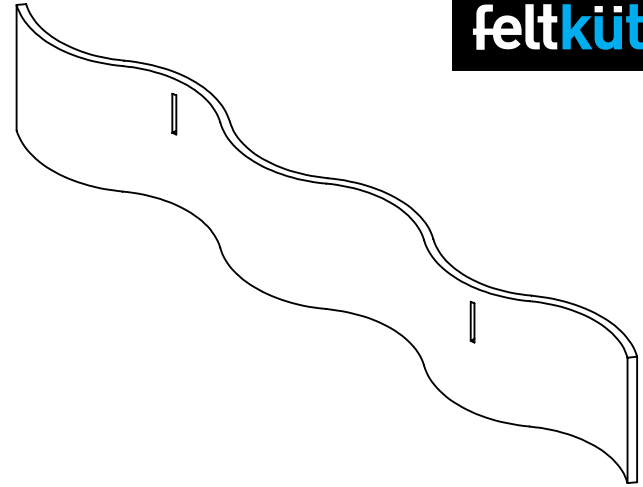
3

2

1

**NOTES:**

1. PARTIALLY DEFINED DRAWING.
  1. FOR ANY MISSING DIMENSIONS, REFER TO 3D MODEL #**ALK-QC7-001-0001** OF SAME VERSION AS THE CURRENT DRAWING NUMBER.
  2. DIMENSIONS FROM THE 3D MODEL ARE BASIC.
  3. GENERAL TOLERANCE FOR THESE DIMENSIONS IS  $\boxed{\text{0.02}}$ .
2. THE PART MUST BE CLEAN AND FREE OF ANY PARTICLE, DUST, METAL CHIP AND CUTTING FLUID.
3. UNLESS OTHERWISE SPECIFIED, ALL DIMENSIONS APPLY BEFORE PAINTING OR PLATING.
4. ASSEMBLE AND PACKAGE USING WORK INSTRUCTIONS AND ENGINEERING SPECIFICATIONS (IF APPLICABLE) RELATED TO THIS PRODUCT.



<p>© 9443-9965 QUÉBEC INC. 2023 THIS DRAWING IS CONFIDENTIAL AND IS THE SOLE PROPERTY OF BESPLINE (9443-9965 QUÉBEC INC.) WHO RESERVES ALL RIGHTS THEREIN. THIS DRAWING IS SUBMITTED IN CONFIDENCE FOR CONSIDERATION BY THE RECIPIENT ALONE. ANY UNAUTHORIZED USE, REPRODUCTION, DISTRIBUTION, OR DISCLOSURE OF THIS DRAWING, IN WHOLE OR IN PART, IS STRICTLY PROHIBITED UNLESS EXPRESSLY GRANTED IN WRITING.</p>	<p><b>GENERAL TOLERANCES</b> (UNLESS OTHERWISE SPECIFIED)</p> <p>X.X : ± .020 X.XX : ± .010 X.XXX : ± .005 ANGLE : ± 1°</p> <p>&lt;OPTIS-SF&gt; <b>DIMENSIONS ARE IN: INCHES</b></p> <p><b>BREAK ALL SHARP EDGES</b></p>	<p>DRAWING NUMBER <b>ALK-QC7-001-0001</b></p>	<p>DRAWING TITLE <b>ATLANTIC</b></p>				
	<p>DESIGNED / DRAWN BY <b>M. A.</b></p>	<p>DATE <b>2024-03-13</b></p>	<p>MATERIAL / SPEC <b>DIVERS</b></p>				
	<p>CHECKED BY</p>	<p>DATE</p>	<p>FINISH <b>AUCUN</b></p>				
	<p>IN ACCORDANCE WITH ASME Y14.5-2009. DO NOT SCALE DRAWING.</p>		<p>MASS <b>1.166 lb</b></p>	<p>DWG REV</p>		<p>SCALE <b>1:10</b></p>	<p>SIZE <b>A</b></p>